



The Balancing Barn



FLOOR ACCESS

Surespan SAC and HIAC Floor Access covers are designed to cover a wide range of applications and finishes, from patterned tread plate to carpet or vinyl tiles, through to recess for timber, ceramics, concrete or walk-on glass.

Featuring gas spring assisted operation, these access covers allow fingertip opening of the lid.

Floor Access Covers are designed to take loadings of up to 16 tonnes (FACTA Class E for vehicular traffic in off-street locations).



RECESSED

30 HIAC RECESSED

For internal or external use with a variety of infill



FLUSH

36 SAC FLUSH ACCESS HATCH

Pedestrian to FACTA Class E rating



40 ENDURANCE HEAVY DUTY

For use in non traffic areas



UPSTAND

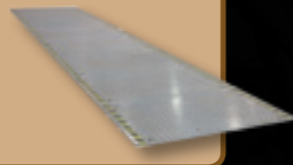
42 RSI UPSTAND

For use in non traffic areas



44 FLOOR DUCTING

Fast and easy to install modular floor ducting.



FACTA Class	Comparisons***		GLW	Wheel Loads		Load Test Data	
	EN124 Class	BS497 approx. equivalent class	Gross Laden Vehicle Weight	Wheel Loads ** (Slow Moving pneumatic)	Wheel Loads ** (Slow Moving solid)	Acceptance Test (Static Wheel Load plus overload & dynamic effects)	Strength Test (Acceptance Test load plus ultimate safety factor)
A Pedestrian	A15	C	Pedestrian Duty	0.6 tonne (5kN)	N/A	5.0 x 1.0 x 1.0 = 5.0kN	5.0 x 1.6 = 8.0kN
AA Domestic driveways	N/A	N/A	5 Tonne	1.5 tonne (15kN)	N/A	15.0 x 1.1 x 1.15 = 19.0kN	19.0 x 1.6 = 31.0kN
AAA Light Pallet Trucks	N/A	N/A	10 Tonne	2.5 tonne (25kN)	0.5 tonne	25.0 x 1.1 x 1.15 = 32.0kN	32.0 x 1.6 = 52.0kN
B Pick Up Trucks	B125	B	Up To 44 Tonne *	5.0 tonne (50kN)	0.75 tonne	50.0 x 1.1 x 1.15 = 63.25kN	63.25 x 1.6 = 101.0kN
C Industrial plants	C250		Up to 44 tonne but under special conditions *	6.5 tonne (65kN)	1.0 tonne	65.0 x 1.1 x 1.15 or 50.0 x 1.1 x 1.5 = 82.5kN	82.5 x 1.6 = 132.0kN
D Fast Moving HGV's	D400	D	Up to 44 tonne but under special conditions *	11.0 tonne (108kN)	3.0 tonne	108.0 x 1.1 x 1.15 or 50.0 x 1.1 x 2.5 = 137.5kN	137.5 x 1.6 = 220.0kN
E Heavy Duty Forklifts	E600	N/A	Special application vehicles	16.0 tonne (158kN)	5.0 tonne	158.0 x 1.1 x 1.15 = 200.0kN	200.0 x 1.6 = 320.0kN
F Airfields	F900	N/A	Special application vehicles	24.0 tonne (237kN)	N/A	237.0 x 1.1 x 1.15 = 300.0kN	300.0 x 1.6 = 480.0kN



*Under the "Road Vehicles (Authorised Weight) Regulations 1998", Axle weights for the UK are limited to 11.5 tonnes maximum. Refer to Acceptance Test for maximum design load/load bearing capacity.
 **Slow moving wheel loads are deemed to be speeds no greater than 20mph.
 ***These comparisons are indicative of the typical suitable area of application of each product call and are not like for like performance comparison. Comparisons are for guidance only and are not intended to be exact.
 Information correct March 2013.



HIAC - FLOOR ACCESS

Surespan HIAC recessed access hatches have a pan type door and can be recessed from 3mm to 100mm. The hatches are rated from FACTA class A-E. The hatches are manufactured from aluminium or stainless steel and operated by either stainless steel gas springs, 24V DC actuators or hydraulics.

This access hatch type is not watertight, if a self draining cover is required please specify. Any water passing the seals will be dispersed via an integral drainage channel, which is fitted with an optional internal or external 3/4 inch flexible hose adaptor (for connection to drain by others).

As part of the initial enquiry the weight of the infill must be advised to enable us to determine the method of operation.

OPTIONAL FEATURES

- Retractable safety grid
- Retractable hand hold
- Retractable single pole
- Retractable protection covers
- Drainage connection
- Powder coated (RAL colours)
- SUREGRIP® Non slip coating
- Viewing window
- Electric
- Hydraulic (for larger hatches)
- Stainless steel
- Stainless steel trim
- Loading
- Acoustic to Rw45dB
- Fire rating
- Internal pull handle
- SureGuard handrail

OPTION CODE

- SG
- RH
- RP
- RPC
- DC
- PC/RAL (Underside only)
- SGRIP
- VW
- E
- HYD
- SS304 or SS316
- SST
- A-F See FACTA table page 29
- 45dB
- FR60, FR120, FR180
- IPH
- SURG

LOCKING OPTIONS

 L03 - Tee lock Standard method of opening lid from above. Stainless steel plug protects internal cab lock keyway.	 LB - Locking padlock box Integral locking box for additional security.	 EIM - Electrical interlock (Micro switch) When remote alarm indication or automatic light switching is required.	 SB - Shoot bolt lock Internal only.
 CAML - Cam lock Additional locking device to ensure positive sealing.	 ELB - Electrical locking box For additional security when linked to a BMS system.	 L07C - Concealed dead lock Key or thumb turn opening with cover plate.	 PRH - Emergency panic release handle

CUSTOM MADE TO ANY SIZE

STANDARD SIZES

PRODUCT Ref	SIZE
HIAC 60.60	600 x 600
HIAC 75.75	750 x 750
HIAC 90.75	900 x 750
HIAC 90.90	900 x 900
HIAC 100.100	1000 x 1000
HIAC 120.120	1200 x 1200
HIAC 120.180	1200 x 1800
HIAC 150.150	1500 x 1500

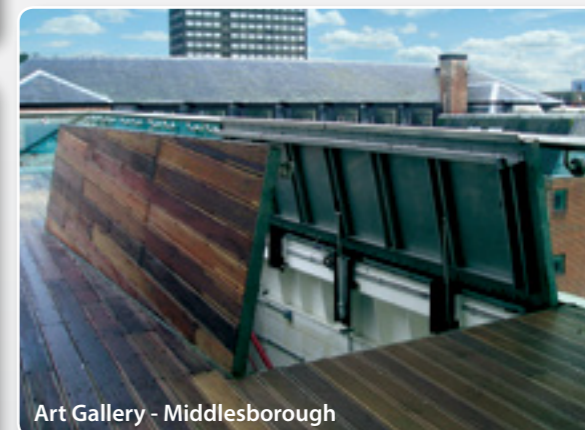
WOOD/TILE INFILL RECESSED ACCESS



Coppice Performing Arts School - Wolverhampton



Leisure Centre - Manchester



Art Gallery - Middlesbrough



Wine Cellar - Great Barr



Plant Access - Swindon



Hot Tub Cover - Sutton Coldfield

TILE/TERRAZZO



STONE/GRANITE

Liffey Service Tunnel - Dublin



Paddington station



Presidential Palace - Abu Dhabi



Queens Square - Crawley



Residential House - Solihull

CASE STUDIES

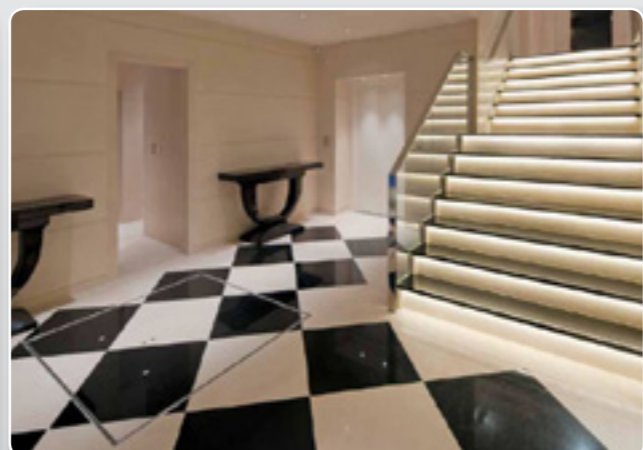
The Balancing Barn



Yale University



Residential House - London



STONE/GRANITE



Joint Service Centre - Wigan

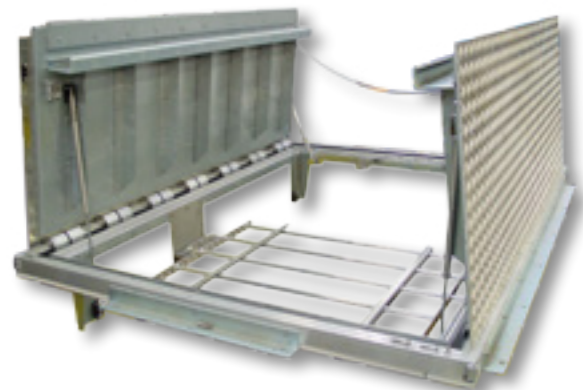
STONE/GRANITE



Liffey Service Tunnel - Ireland

Car Park Escape Hatches - Stockholm





SAC - FLUSH ACCESS

Surespan type SAC Heavy Duty Access Covers are designed to be rated up to Facta Class E for vehicular traffic in off-street locations. The lids are manufactured in aluminium. The aluminium hatches can take loadings from 5 to 19 tonnes (FACTA class B to E) and are available in standard single and double leaf sizes, see the chart on page 29.

LOCKING OPTIONS

L03 - Tee lock Standard method of opening lid from above. Stainless steel plug protects internal cab lock keyway.	LB - Locking padlock box Integral locking box for additional security.	EIM - Electrical interlock (Micro switch) When remote alarm indication or automatic light switching is required.	SB - Shoot bolt lock Internal only.
CAML - Cam lock Additional locking device to ensure positive sealing.	ELB - Electrical locking box For additional security, linked to a BMS system.	L07C - Concealed dead lock Key or thumb turn opening with cover plate.	PRH - Emergency panic release handle

CUSTOM MADE TO ANY SIZE

OPERATION - SEE PAGE 50

HYDRAULIC HYD	PNEUMATIC PN
ELECTRIC E	SOLAR SOLAR

HOW TO SPECIFY & ORDER

Choose your model and add the option codes listed above, see the example below for a 1000 x 1000 Flush access cover, pedestrian loading, retractable safety grid, drainage connector and powder coated to RAL 9002. **SAC - A/SG/DC/RAL9002-100.100**

If in doubt give our sales team a call on 01922 711185 or use the mail form on our website to contact us.

OPTIONAL FEATURES

- Retractable safety grid
- Retractable hand hold
- Retractable single pole
- Retractable protection covers
- Drainage connection
- Powder coated (RAL colours)
- SUREGRIP® Non slip coating
- Viewing window
- Electric
- Hydraulic (for larger hatches)
- Stainless steel
- Loading
- Ventilated upstand
- Acoustic to Rw45dB
- Fire rating
- Internal pull handle
- Emergency panic release handle
- SureGuard handrail

OPTION CODE

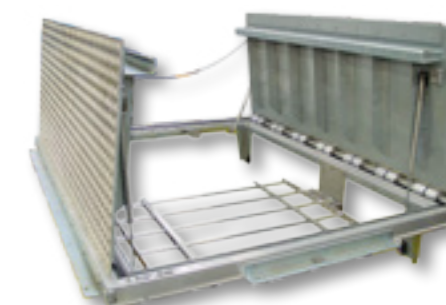
- SG
- RH
- RP
- RPC
- DC
- PC/RAL
- SGRIP
- VW
- E
- HYD
- SS304 or SS316
- A-F See FACTA table page 29
- VU
- 45dB
- FR60, FR120, FR180
- IPH
- ERH
- SURG

CUSTOM MADE TO ANY SIZE

SPECIAL PROJECTS

Surespan manufactured and supplied a floor hatch to enable a Finnish energy company to access their biomass pit at their new energy plant in Lithuania. The 5000 x 5000mm hydraulically operated, double leaf hatch was designed to be easily operated by an electrically driven pump power pack.

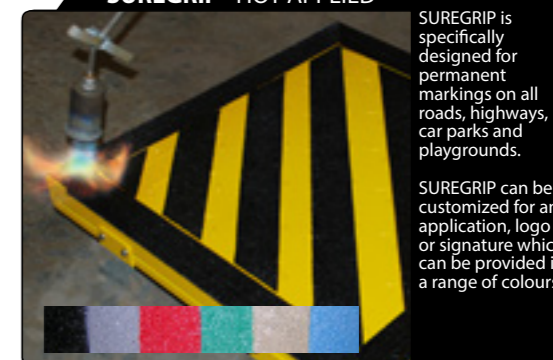
Access was required for a grab crane to gain easy access to the biomass fuel store. Surespan worked with engineering consultants AF Consult to come up with an effective solution.



SUREGRIP® HOT APPLIED

SUREGRIP is specifically designed for permanent markings on all roads, highways, car parks and playgrounds.

SUREGRIP can be customized for any application, logo or signature which can be provided in a range of colours.



STANDARD SIZES

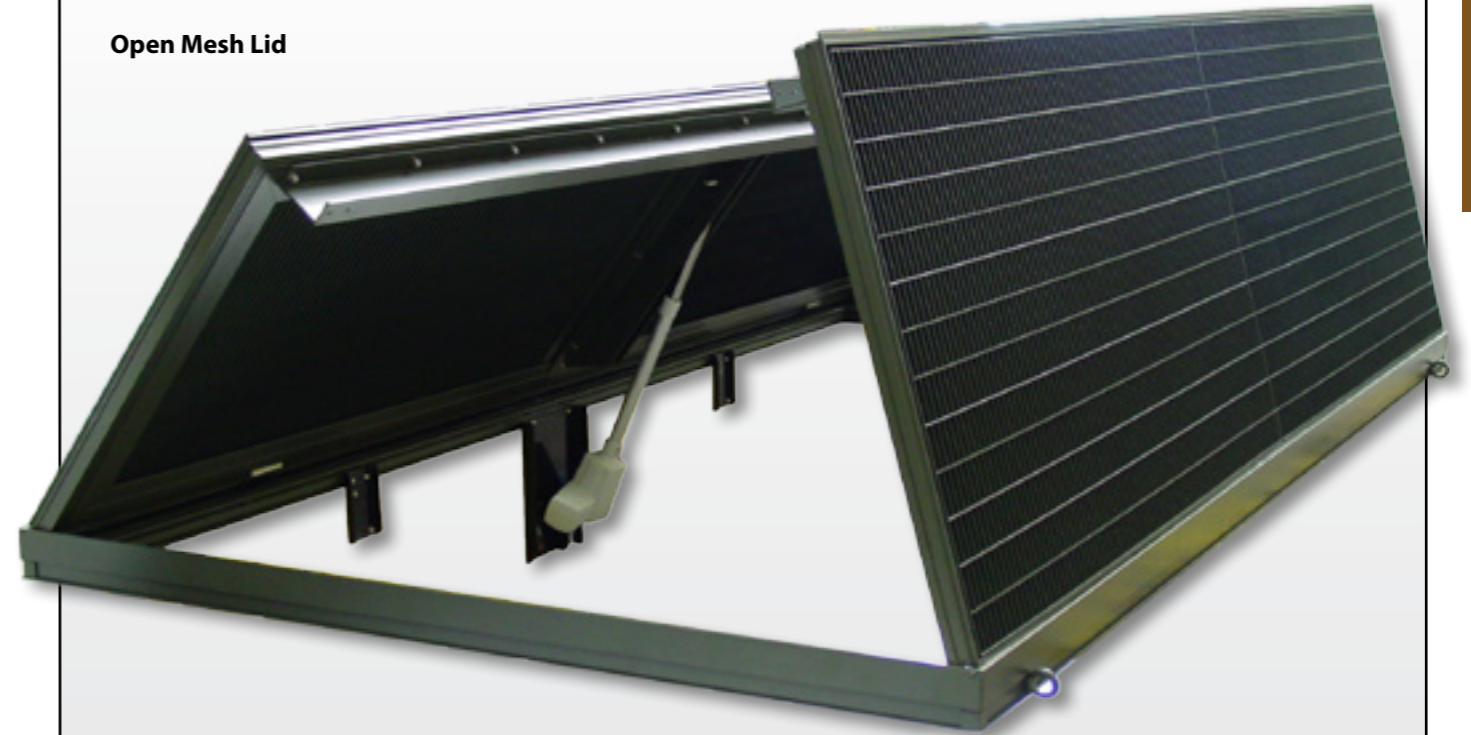
PRODUCT Ref	SIZE	WEIGHT
SAC 60.60	600 x 600	33 kg
SAC 75.75	750 x 750	43 kg
SAC 90.75	900 x 750	47 kg
SAC 90.90	900 x 900	53 kg
SAC 100.100	1000 x 1000	61 kg
SAC 120.120	1200 x 1200	77 kg
SAC 120.180	1200 x 1800	102 kg
SAC 150.150	1500 x 1500	104 kg

SAC SOLUTIONS



SAC SOLUTIONS

Open Mesh Lid



Ardmore Construction - London

